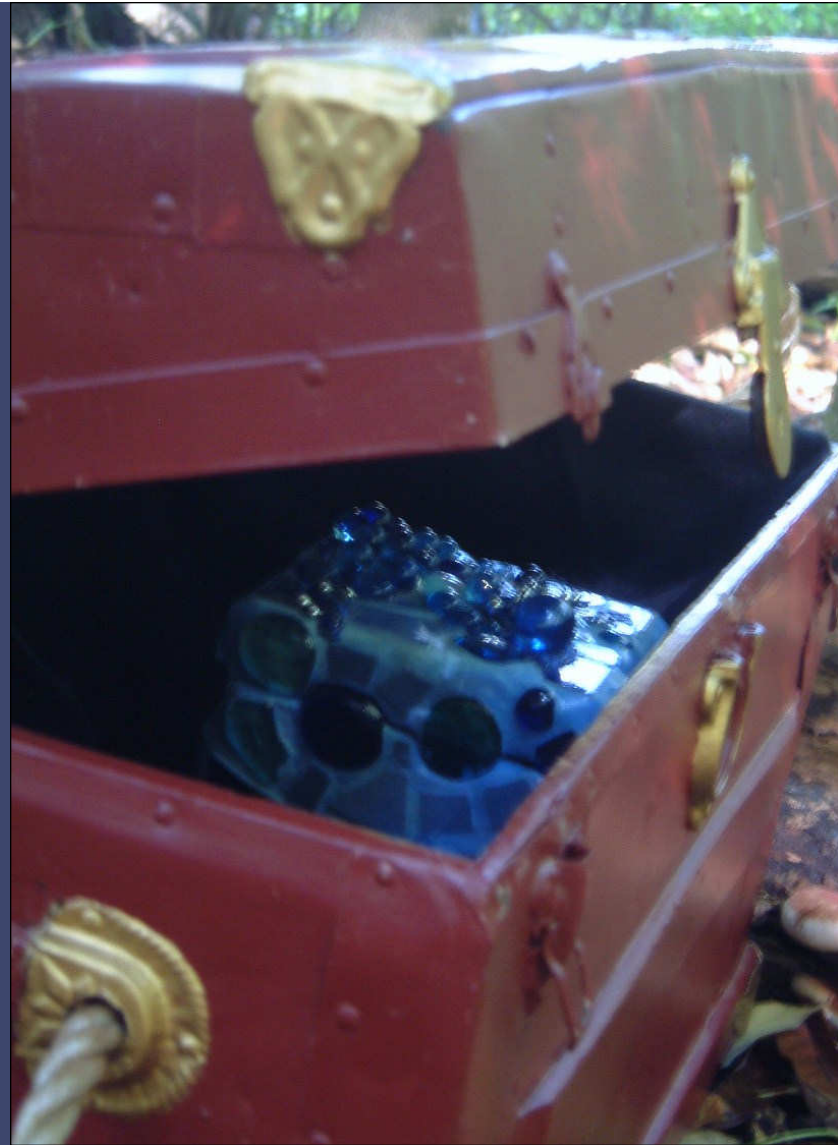




Camp Henry (www.camphenny.org) provides year-round programs of personal growth and development through children's camps, family camps, conferences and retreats. Located on Kimball Lake in Newaygo, Michigan, our facility sits on over 200 acres of forests, fields and wetlands, providing the perfect environment for education, reflection, and team building. Founded in 1937, Camp Henry is a ministry of Westminster Presbyterian Church.

Betsy Bougie

Year Round Program Director
(231) 652-6472 ext. 14



Treasure C.H.E.S.T



Treasure C.H.E.S.T.

Camp Henry Experiential Storybased Teambuilding

Camp Henry's Treasure C.H.E.S.T program is a unique storytelling based teambuilding adventure that applies recognized experiential education techniques in a creative and exciting way!

Every part of this imaginative and colorful program is designed to actively engage participants in an inspiring and amusing way using costumes, theatre, scenes and characters as well as the adventure courses Camp Henry is known for.

Characters can involve elves, trolls, giants, monsters, pirates, princes, princesses, talking animals and more!

Everyone takes home a piece of the treasure as a reminder of the adventure and the learnings gained from this unique experience.



How does Treasure C.H.E.S.T work?

Participant teams are chosen and given a unique and fun challenge. Once the challenge is met, teams move on to the next "scene" (challenge) in the story. The adventure is complete when the treasure chest is found.

What is so unique about Treasure C.H.E.S.T?

Team members are involved in a teambuilding process that utilizes both creativity and hands on problem solving skills in a fun and interesting way. Storybased adventure programs are designed specifically to fit the needs of your group. Challenges, characters and treasures are selected to meet group objectives.

Who benefits from Treasure C.H.E.S.T programs?

Many different organizations, teams and groups from youth to adult. The Treasure C.H.E.S.T adventure has been very successful with youth groups, mentoring programs and schools.

How can I get more information?

Please contact Mat Emerick, Assistant Program Director, at 231.652.6472 x 21 to custom build your unique and exciting program!